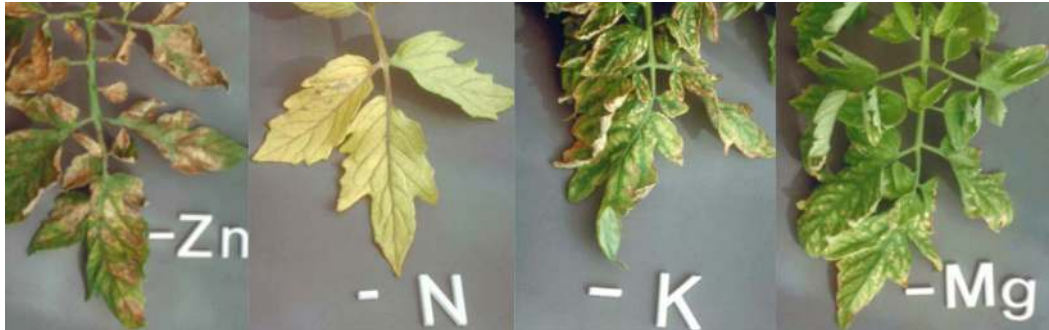



Vegetable Growers: Are your plants suffering from "NUTRIENT LOCKOUT"?




“NUTRIENT LOCKOUT” is when nutrients are in the root zone, but aren't assimilated. A common cause is electrochemical imbalance - EXCESS of one nutrient locks out another nutrient.

THE SOLUTION



Apply BioLiNE Gold with your nutrient program to prevent nutrient lockout and assure continuous balance growth throughout the season. BioLiNE Gold uses **Dynamic Nutrient Exchange** to create **Bioactive Mineral Complex** restoring nutrient balance. Use BioLiNE Gold in your starter, irrigation, and foliar nutrient applications

THE SUCCESS



10 oz/acre of BioLiNE Gold applied regularly will exchange nutrients in the soil solution between microbes and plant roots and transport them to all parts of the plant improving electrochemical balance in the plant. **Success comes from making the right decision at the right time.**

Let's talk about **Dynamic Nutrient Exchange** and how to get it to work on your farm!

Contact Jim Otte at 913-787-1145 or jotte@biolinecorp.ca